

Primus Elite™ Avionics For the Embraer Legacy 600

Honeywell



Legacy 600 Flight Deck
With Primus Elite™ DU875

Fly safer and more efficiently, reduce maintenance costs, and increase your aircraft's value with Primus Elite Avionics

Primus Elite Avionics Upgrade

Primus Elite is a unique and specifically developed upgrade for the Legacy 600 offered in three distinctive Packages.

Package One (DU875) – the DU-875 LCD for CRT form/fit display upgrade delivers the powerful graphics that only liquid crystal displays can deliver – Electronic Jeppesen charts and maps can be displayed on either of the multifunction displays, replacing the flight crew task of fumbling through books of paper charts during critical phases of flight.

Package One - Option 1.1 - XM™ WX Satellite Weather – provides an always-on display of graphical weather enabling strategic route planning around adverse weather conditions resulting in on-time arrivals and fuel savings. This optional feature also improves passenger comfort by allowing the flight crew to optimize routes and cruising altitudes with real time weather and winds aloft data.

The Jeppesen electronic charts and maps, and the optional XM graphical weather overlay features are enabled through dual cursor control graphical interfaces. Easy to use, easy to operate and with the available graphical information displayed in the pilot's primary field of view, the new data is easy to scan and assimilate quickly!

Package Two (FMS 6.1) - Required Navigation Performance (RNP) 0.3 / Vertical Navigation (VNAV) – RNP 0.3 provides better access to high traffic or terrain challenged airports and enhances safety when flying into unfamiliar airports. It also provides coupled, curved path guidance (lateral and vertical) with lower minimums than standard GPS procedures. The automatic set up of approaches enables seamless transitions between Enroute and Approach modes. Also, a standard feature of Package Two is fully coupled V-NAV capability during the full flight regime as well as the approach phase.

Package Two - Option 2.1 - Wide Area Augmentation System –Localizer Performance with Vertical Guidance (WAAS-LPV) - offers lower minimum standard LNAV/VNAV/GPS approaches, near ILS Category 1 minimums with no ILS on the field and provide the ability to meet future ADS-B Out Mandates with WAAS GPS sensors.

Package Two - Option 2.2 - Future Air Navigation (FANS-1A) including Air Traffic Services (ATS) Facilities Notification (AFN) and Automatic Dependent Surveillance – Contract (ADS-C)

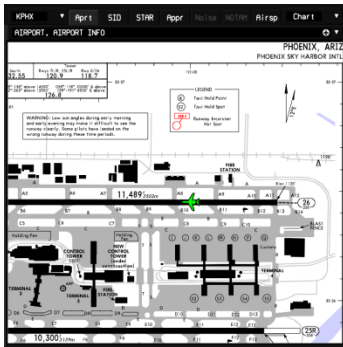
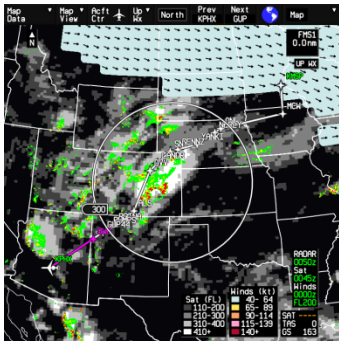


Chart Display
With Geo Referenced Aircraft
Symbol



Optional XM Weather
Overlay Display

Key FANS benefits include; reduced crew workload, fuel savings with more efficient oceanic routing, uplinked clearances that are accepted directly into flight plan with a simple button push eliminating manual entries and fewer delays on the ground while awaiting oceanic clearance.

Package Three (EGPWS) - SmartRunway™ / SmartLanding™ – SmartRunway provides improved situational awareness to help lower the probability of runway incursions by providing timely aural advisories to the flight crew during taxi, takeoff, final approach, landing and rollout. It also complements ‘heads-up’ and ‘quiet’ cockpit operations and uses Honeywell’s worldwide terrain and runway database, which has logged over 800 million flight hours

SmartLanding™ - improves flight safety and helps reduce the risk of runway excursions by alerting crew members if the aircraft is going too fast, too high or at risk to incur a long landing supporting more stabilized approaches and minimizing long landings.

Simple and affordable, these flight deck advancements translate to enhanced passenger safety and comfort and reduce the overall cost of ownership.

Additional Primus Elite Upgrade Benefits

Improved Safety and Comfort - the new graphical display capability of Primus Elite improves flight safety and comfort by providing advanced situational awareness cues for the pilot including the display of the aircraft symbol on all geo-referenced charts and maps. These additional graphical cues significantly reduce the pilot’s scan and data assimilation time facilitating quicker decisions and smoother transitions to changing flight profiles due to weather or air traffic control.

Reduced Cost of Ownership

- **Display Reliability** - the LCD displays used in Primus Elite are significantly more reliable than the CRTs they replace
- **System Weight Reduction** – 40 -100lbs of weight savings estimated at up to \$1,000.00 per pound per year in fuel savings.
 - Each LCD display is ~7 lbs lighter than the CRT it replaces
 - LCDs do not require cooling fans and associated aircraft ducting
 - Primus Elite supports a Terminal Charts and Maps Paperless solution* eliminating the need to carry the 30-40lbs of paper Charts on-board
- **New 24 month Display Warranty**
- **Internal DU Maintenance Diagnostics Page**

Increased Aircraft Value – the Primus Elite Upgrade for the Legacy 600 is documented in the 2013 Aircraft Blue Book

Availability

Available now from Service Centers that are both Embraer and Honeywell Authorized

Program Incentives

For new or existing Honeywell Avionics Protection Plan (HAPP) customers who purchase Package One of the Primus Elite upgrade, the following incentives are offered:

- New multi-year agreement with fixed 3% escalation
- First year FREE HAPP coverage
- Second and Third year \$10,000 off regular contract price
- Fourth year and beyond, will be calculated using regular contract pricing but the new

higher reliability LCD DUs will continue to provide a price incentive over the same contract calculated using the older CRT's.

Learn More

To find out more about Primus Elite™ options and pricing, please contact an [Embraer Authorized Service Center](#) or your local Honeywell Area Sales Manager.

You can also visit us at www.honeywellbusinessaviation.com/primus_elite

* Paperless Terminal Charts and Maps Solution - while Primus Elite meets all regulatory requirements for a Paperless Terminal Charts and Maps Solution a **Letter Of Authorization (LOA) must be obtained by the operator.**